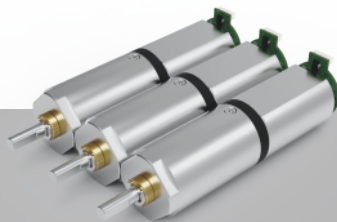


10
mm

Metal
五金



ZWBMD010010

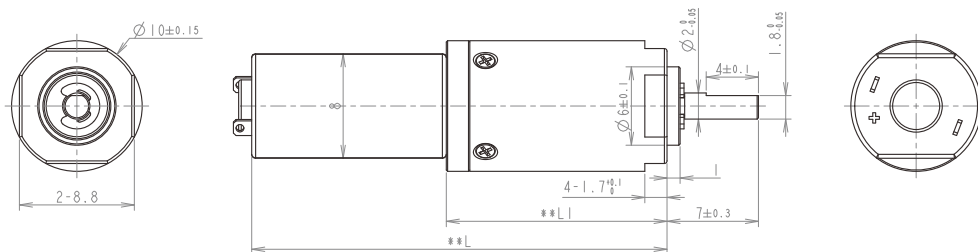
齿轮箱规格 Gearbox Specifications

外径 Outer diameter	10mm	轴承 Bearing	含油轴承 Porous bearing	滚动轴承 Rolling bearing
材质 Material	五金 Metal	轴向窜动 Axial endplay	≤0.3mm	≤0.2mm
旋转方向 Direction of rotation	cw & ccw	输出轴向负载 Radial loading on output shaft	≤2N	≤7N
齿轮箱回程差 Gear backlash	≤3°	工作温度 Operating temperature range	-20 ~ +85°C	

齿轮级数 Gearbox Stages

	1	2	3	4
减速比 Reduction ratio	3 / 5	13 / 19 / 28	46 / 69 / 102 / 151	168 / 249 / 368 / 546 / 809
最大容许扭力 (gf.cm) Max rated torque of gearbox (gf.cm)	1000	1000	1000	1000
瞬间容许力矩 (gf.cm) Instant torque of gearbox (gf.cm)	2000	2000	2000	2000
齿轮箱效率 (%) Gearbox efficiency (%)	87	74	63	56
长度 (mm) Gearbox length L1 (mm)	9.7	12.8	15.9	19

技术插图 | Technical Drawing



马达规格参数 Motor Specifications

马达(可选择) Motor type (optional)	直流有刷电机、空心杯电机、步进电机 Brushed DC motor, Coreless motor, Stepper motor	输入速度 Input speed	≤3000rpm
电压(可选择) Voltage (optional)	3-24V	电流 Current	150mA max

型号 Model	Rated Speed 额定转速	Max Speed 最高转速	Max Rated Torque 额定容许力矩	Max Instant Torque 瞬间容许力矩	Reduction Ratio 减速比	Gearbox Length 减速箱长 L1	Overall Length 总长 L
	rpm	rpm	gf.cm	gf.cm			
ZWBMD010010-3	3917	7500	1000	2000	3	9.7	24.7
ZWBMD010010-5	2645	5000	1000	2000	5		
ZWBMD010010-13	1085	2308	1000	2000	13	12.8	27.8
ZWBMD010010-19	742	1579	1000	2000	19		
ZWBMD010010-28	504	1071	1000	2000	28		
ZWBMD010010-46	307	652	1000	2000	46	15.9	30.9
ZWBMD010010-69	204	435	1000	2000	69		
ZWBMD010010-102	138	294	1000	2000	102		
ZWBMD010010-151	93	199	1000	2000	151		
ZWBMD010010-168	84	179	1000	2000	168	19	34
ZWBMD010010-249	57	120	1000	2000	249		
ZWBMD010010-368	38	82	1000	2000	368		
ZWBMD010010-546	26	55	1000	2000	546		
ZWBMD010010-809	17	37	1000	2000	809		

注：可根据客户要求定制 Please contact us for customized products