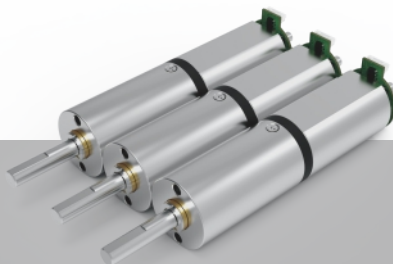


12
mm

Metal
五金



ZWMD012012

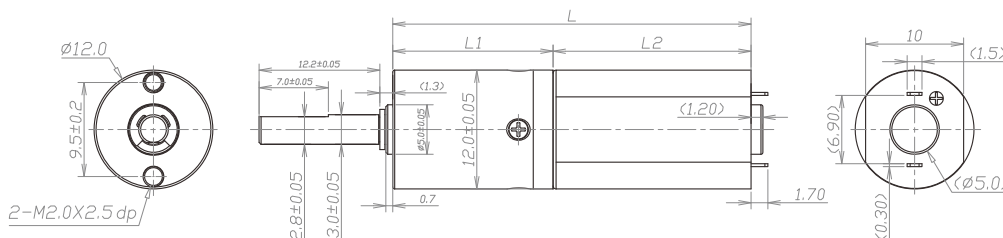
齿轮箱规格 Gearbox Specifications

外径	Outer diameter	12mm	轴承	Bearing	含油轴承 Porous bearing
材质	Material	五金 Metal	轴向窜动	Axial endplay	≤0.3mm
旋转方向	Direction of rotation	cw & ccw	输出轴径向负载	Radial loading on output shaft	≤10N
齿轮箱回程差	Gear backlash	≤3°	工作温度	Operating temperature range	-20 ~ +85°C

齿轮级数 Gearbox Stages

		1	2	3	4
减速比	Reduction ratio	4 / 6	16 / 24 / 36	64 / 96 / 144 / 216	256 / 384 / 576 / 864 / 1296
最大容许扭力 (gf.cm)	Max rated torque of gearbox (gf.cm)	300	1000	1500	2000
瞬间容许力矩 (gf.cm)	Instant torque of gearbox (gf.cm)	1000	3000	4500	5000
齿轮箱效率 (%)	Gearbox efficiency (%)	87	74	63	56
长度 (mm)	Gearbox length L1 (mm)	12.4	16.2	20	23.8

技术插图 | Technical Drawing



马达规格参数 Motor Specifications

马达(可选择) Motor type (optional)	直流有刷电机、直流无刷电机、空心杯电机、步进电机 Brushed DC motor, Brushless DC motor, Coreless motor, Stepper motor	输入速度 Input speed	≤3000rpm
电压(可选择) Voltage (optional)	3-24V	电流 Current	250mA max

型号 Model	Rated Speed 额定转速	Max Speed 最高转速	Max Rated Torque 额定容许力矩	Max Instant Torque 瞬间容许力矩	Reduction Ratio 减速比	Gearbox Length 减速箱长 L1	Overall Length 总长 L
	rpm	rpm	gf.cm	gf.cm		mm	mm
ZWMD012012-4	1875	7500	300	1000	4	12.4	32.4
ZWMD012012-6	1250	5000	300	1000	6		
ZWMD012012-16	469	1875	1000	3000	16	16.2	36.2
ZWMD012012-24	313	1250	1000	3000	24		
ZWMD012012-36	208	833	1000	3000	36		
ZWMD012012-64	117	469	1500	4500	64	20	40
ZWMD012012-96	78	313	1500	4500	96		
ZWMD012012-144	52	208	1500	4500	144		
ZWMD012012-216	35	139	1500	4500	216		
ZWMD012012-256	29	117	2000	5000	256	23.8	43.8
ZWMD012012-384	20	78	2000	5000	384		
ZWMD012012-576	13	52	2000	5000	576		
ZWMD012012-864	9	35	2000	5000	864		
ZWMD012012-1296	6	23	2000	5000	1296		

注：可根据客户要求定制 Please contact us for customized products